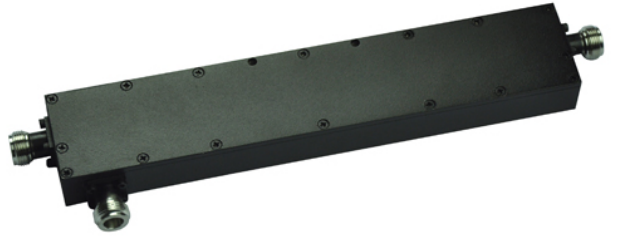


Highlights

- Integrated cavity design: minimizes solder joints and optimizes PIM performance, guaranteeing superior performance and reliability.
- Lower PIM, lower insertion loss, higher isolation, and higher power handling capacity.
- IP65 protection enables stable working in any environment.
- Compact design, easy installation.
- Lifetime warranty.



MODELS

Indoor	Outdoor	Coupling Values	Attenuation	Insertion Loss	Isolation
V5C727-N4	V5C727-N4P	5dB	±0.7dB	≤2.1dB	≥23dB
V6C727-N4	V6C727-N4P	6dB		≤1.6dB	≥24dB
V7C727-N4	V7C727-N4P	7dB	±0.8dB	≤1.4dB	≥25dB
V10C727-N4	V10C727-N4P	10dB	±1.0dB	≤0.8dB	≥28dB
V15C727-N4	V15C727-N4P	15dB	±1.2dB	≤0.45dB	≥33dB
V20C727-N4	V20C727-N4P	20dB	±1.5dB	≤0.22dB	≥38dB
V30C727-N4	V30C727-N4P	30dB	±1.8dB	≤0.2dB	≥45dB

ELECTRICAL SPECIFICATIONS

Frequency	350–2700MHz
Intermodulation	≤-140dBc (IMD3 with 2×20W)
VSWR	≤1.25
Impedance	50Ω
Power Handling	200w Average

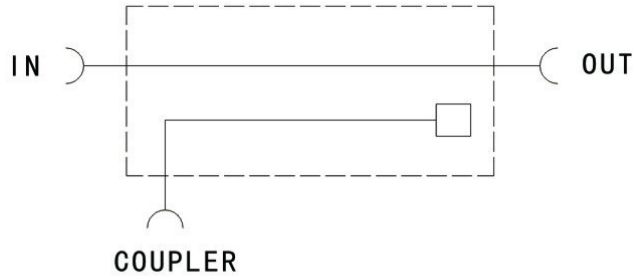
ENVIRONMENT SPECIFICATIONS

Operating Temperature	-25°C to +75°C -13°F to +167°F
Storage Temperature	-40°C to +85°C -40°F to +185°F
Relative Humidity	Up to 95%
Application	Indoor or Outdoor (IP65)

MECHANICAL SPECIFICATIONS

Color	Black (Indoor), Gray (Outdoor)
Connectors	N-Female
Weight	0.575Kg 1.27lb
Dimensions	231*44*22.5mm 9.09*1.73*0.88in

Block Diagram



Outline Drawing

