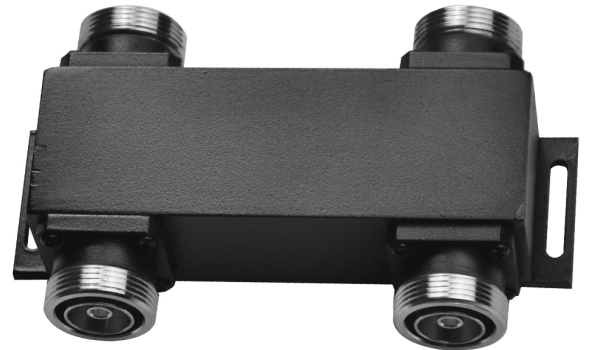


## Highlights

- Integrated cavity design: minimizes solder joints and optimizes PIM performance, guaranteeing superior performance and reliability.
- Lower PIM, lower insertion loss, higher isolation, and higher power handling capacity.
- IP65 protection enables stable working in any environment.
- Compact design, easy installation.
- Lifetime warranty.



## ELECTRICAL SPECIFICATIONS

| Models          | V4H727M-D5 (Indoor)        | V4H727M-D5P(Outdoor IP65) |
|-----------------|----------------------------|---------------------------|
| Frequency       | 698–2700MHz                |                           |
| Intermodulation | ≤-150dBc (IMD3 with 2×20W) |                           |
| Insertion Loss  | ≤3.6dB                     |                           |
| Isolation       | ≥20dB                      |                           |
| VSWR            | ≤1.3                       |                           |
| Impedance       | 50Ω                        |                           |
| Power Handling  | 300w Average               |                           |

## ENVIRONMENT SPECIFICATIONS

|                       |                                  |                |
|-----------------------|----------------------------------|----------------|
| Operating Temperature | -30°C to +75°C   -22°F to +167°F |                |
| Storage Temperature   | -40°C to +85°C   -40°F to +185°F |                |
| Relative Humidity     | Up to 95%                        |                |
| Application           | Indoor                           | Outdoor (IP65) |

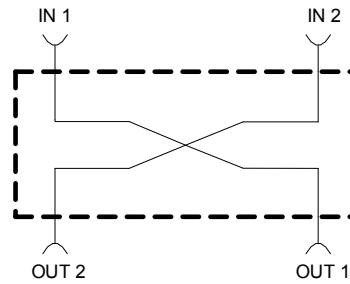
## MECHANICAL SPECIFICATIONS

|            |                                |  |
|------------|--------------------------------|--|
| Color      | Black                          |  |
| Connectors | DIN-Female                     |  |
| Weight     | 0.97Kg   2.1lb                 |  |
| Dimensions | 147*75*36mm   5.78*2.95*1.42in |  |

## ORDER INFORMATION

| Model         | Indoor or Outdoor | PIM@700MHz | PIM@800MHz, 900MHz,1800MHz,2100MHz, 2600MHz             |
|---------------|-------------------|------------|---|
| V4H727M-D5    | Indoor            | NA         | -150dBc   |
| V4H727M-D5P   | Outdoor IP65      | NA         | -150dBc   |
| V4H727M-D5-A  | Indoor            | -150dBc    | Typical:-150dBc (Practically Measured:-155dBc---165dBc) |
| V4H727M-D5P-A | Outdoor IP65      | -150dBc    | Typical:-150dBc (Practically Measured:-155dBc---165dBc) |

### Block Diagram



### Outline Drawing

